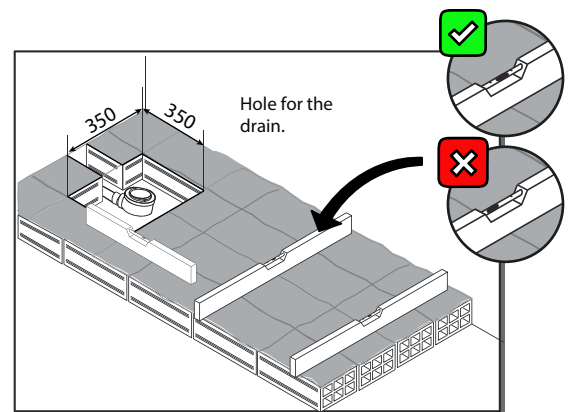
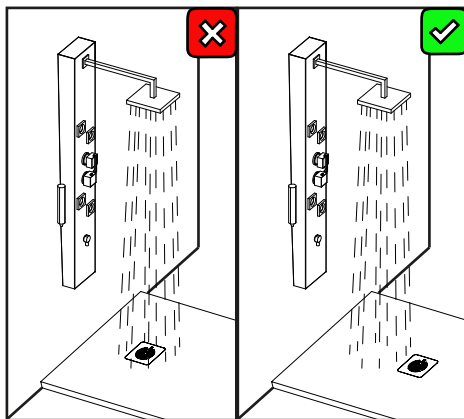
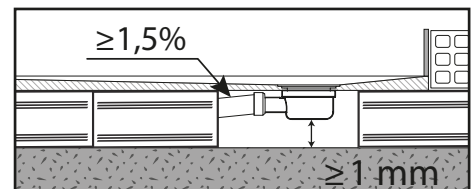


1. Create an even support surface for the whole dimension using a levelling mortar and leave it to set for the amount of time indicated by the manufacturer.

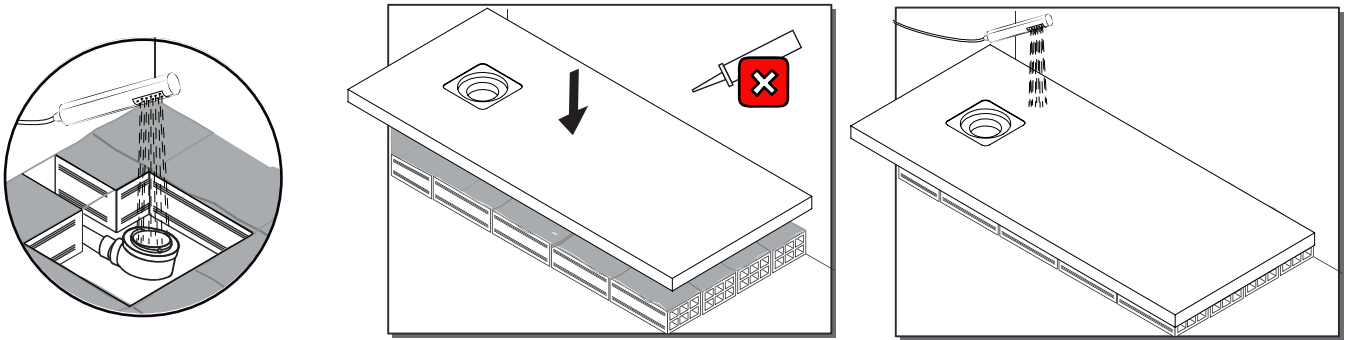


Ensure that the falling water and pipes are not aligned so that drainage capacity is not lost.

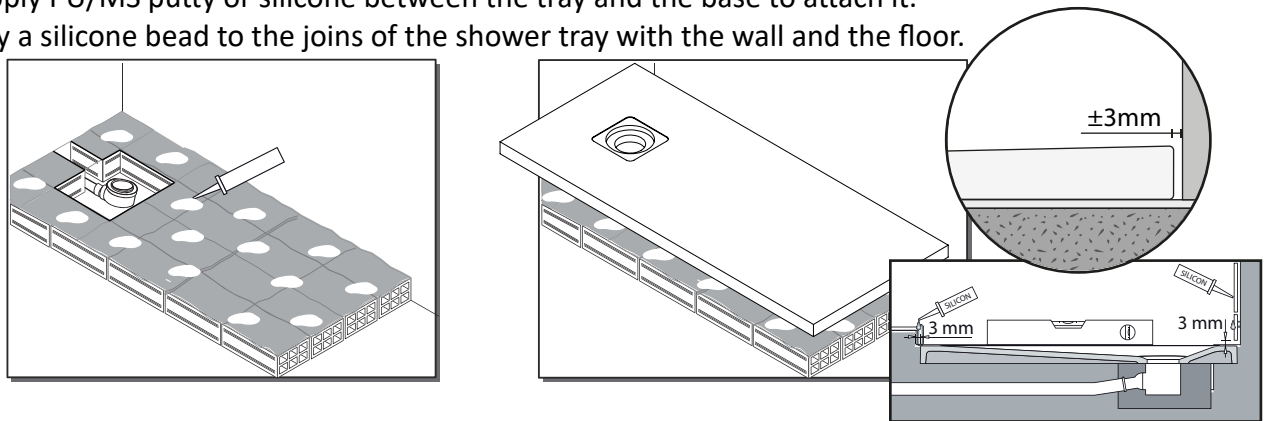
During installation of the pipes, ensure that the drainpipe is inclined equal to or greater than 1.5% to facilitate drainage and that it is placed 1mm or more from the floor.



2. Perform a water drainage test to ensure correct installation. Verify absence of obstructions and drainage capacity.

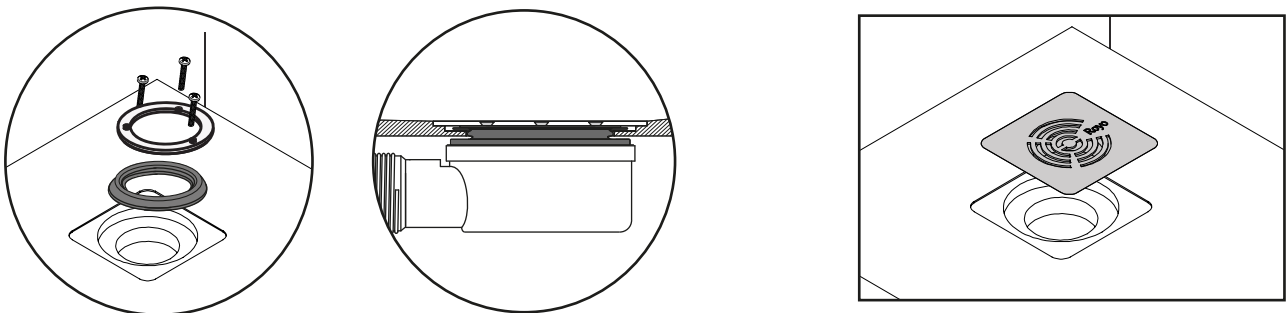


3. Apply PU/MS putty or silicone between the tray and the base to attach it. Apply a silicone bead to the joins of the shower tray with the wall and the floor.



4. Connect the valves to the shower tray.

5. Fit the decorative cover.



It is normal for small traces of water to remain as a result of surface tension.



Routine cleaning of the tray will be done with water.

Use a damp sponge with soap for thorough cleaning. Use an anti-limescale product in case of calcareous sedimentation. Finally, rinse with warm water and leave to dry. If any chemical product, such as bleach, acetone, hair dye, mercurochrome and so on comes into contact with the shower tray, remove it immediately with neutral soap and plenty of water and dry with a damp cloth. Do not use abrasive materials for cleaning.



Protect the tray once it is in place and before tiling (you can use the packaging of the tray to do this) to avoid traces of cement, plaster or similar falling on the tray. Our company will not be responsible for deterioration of the shower tray as a result of these instructions not being followed.

GB

According to Law 23/2003, of 10 July (Ley de Garantías en la venta de bienes al consumo), Royo® guarantees the repair or replacement of the product if there is any manufacturing defect.

In the event of product replacement, the responsibility of Royo® is limited, according to the Law, to replacement without cost to the customer and it is exempt from any cost derived from the work to be done for the assembly or disassembly of elements that impede said replacement..

Failure to comply with any of the rules detailed above and/or failure to check the correct drainage beforehand will be sufficient cause to invalidate the product warranty.



ROYO SPAIN S.L.
C/Rio Vinalopó, 69 - 46930
Quart de Poblet (España/Spain)
18
DoP Nº14527
EN 14527 - CL 1
CA - DA